

# SUPER SAM 245

## BASKETBALL UNIT PRODUCT BREAKDOWN



LEVEL 3



### SUPER SAM 245

Setting the world standard for excellence. Designed and manufactured by the inventors of the original SAM (Spring Assisted Mechanism) and DSF (Dynamic Sub Frame).

### FEATURES

- Complete portable backstop unit.
- 8' projection.
- Total Weight 2,623.5 lbs.
- One step easy set-up system, within 5 seconds 1 person can set the basketball backstop into the right game position
- FIBA Level 3 approved.
- Strong and stable backstop, white coated high-tensile strength steel frame. Lifetime maintenance free pivot bearings, 100% enclosed counterweights.
- 2 wheels in the front and 2 triple fixed wheels in the rear for optimal weight distribution.
- Tempered glass backboard.
- 180° multidirectional breakaway ring.
- Sturdy nylon Anti-Whip basketball net.
- Safety padding for the front, sides, backboard and neck. Come in a variety of color and can be customized.
- Floor hook at the rear of the frame. 2 positioning pins for quick and precise installation on the court. Floor connector set included: for both PU floors and suspended floors.

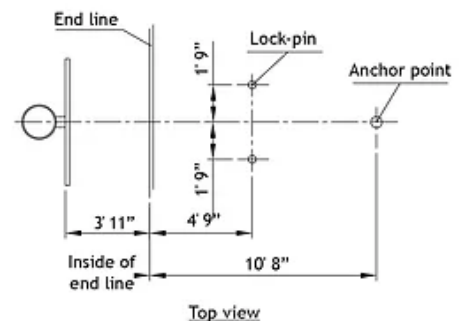
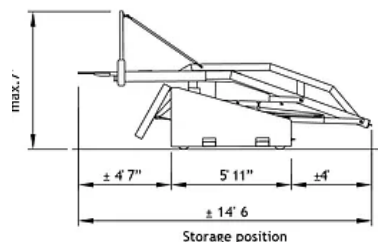
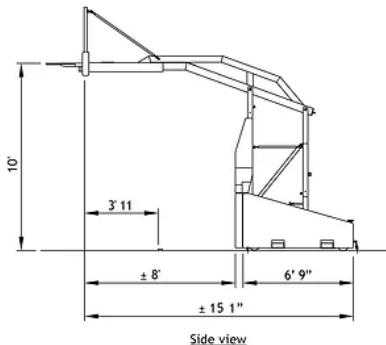
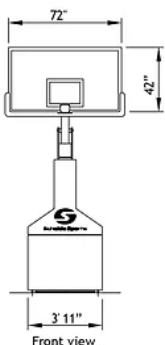


STORAGE



FULL PROJECTION

FOR WORLD-CLASS VENUES AND HIGHEST LEVEL OF COMPETITION



### CONTACT INFO:

[www.scheldesports.us](http://www.scheldesports.us)  
[info@scheldesports.com](mailto:info@scheldesports.com)  
833-724-3533