



## **Owner's Manual**

# **Infinity Volleyball System**

## **Set Up Instructions**

REV 1020

# Infinity System Set Up Instructions

Go to [www.scheldesports.us](http://www.scheldesports.us) and click on volleyball set up instructions for set up video.

1. Place the uprights in the floor sleeves taking care to position the sliding rails toward the court.
2. Use a measuring tape to position the upper J-Hook on the end post and the top of the pulley on the winch post 2 inches above the net height you are trying to achieve. (Example: for women's net height at 7'-4 1/8" set the height as described above to 7'-6"). Move the rails by lifting the lever lock handle, position the rail at desired height and press the handle down to lock the rail in position. NOTE: Make sure that the posts are set at the exact same height. This will cause problems with net height later if not done precisely.
3. Using the supplied height marking stickers, place the W sticker on the post so the blue line is even with the bottom of the sliding rails. You can then measure up the post 7.5 inches and place the M sticker there and measure down from the W sticker 4 inches for the J sticker at Junior height of 7 feet.
4. Make sure the winch cable is fully extended by turning the crank handle until it stops while pulling lightly on the end of the cable. Hook the spring clip in the net to the winch cable. (See Illustration 1)
5. At the opposite end of the net, hook the upper and lower "zip straps" to the J-Hooks. Pull the straps to adjust the net position so the side dowel is straight up and down and positioned about a foot outside the court sideline. Trim excess strap with scissors and burn the ends of the straps slightly to prevent fraying. Note: Leave a foot or two of excess strap so your net can be adjusted to fit differing sleeve distances should you use your net on different courts. (See Illustration 2.) Excess strap can be looped through the quick links and tied off to get it out of the way.
6. Using the winch, tighten the top of the net putting plenty of tension on the top Kevlar cable. There is a tension gauge on the winch. Tighten until the orange indicator is just above the 330 mark to start. You will notice that the posts begin to deflect. (They are engineered to do so without harming them.)
7. Clip the rope ratchet to the lower net fixation ring on the winch and tighten the bottom of the net to desired tension. NOTE: Tensioning the bottom of the net is how you make the final net height adjustment. Tightening the bottom of the net pulls the net height down. Make your final net height adjustment by tensioning the bottom of the net more to lower net height or loosening the bottom tension a bit to raise it. You can also increase the tension with the winch to raise the net height a bit.

8. Check net height at middle and sidelines making sure that the center height is exact and the height at the sidelines in no more than  $\frac{3}{4}$ " above regulation height. Use the steps in number 6 above to refine height.
9. Once you have achieved proper net height. Make a mark on the post at the bottom of the rails with a permanent marker so you can position them correctly on subsequent set ups.

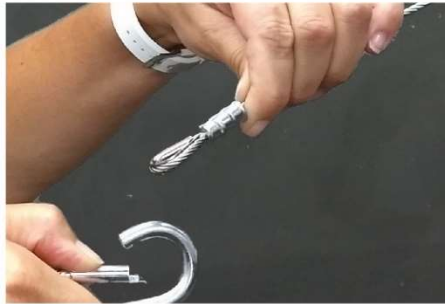


Illustration #1

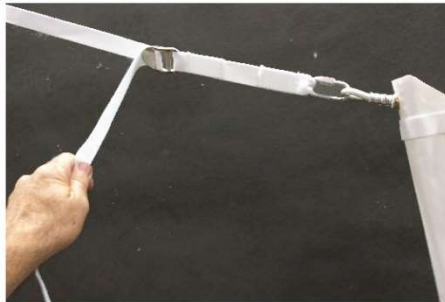


Illustration #2

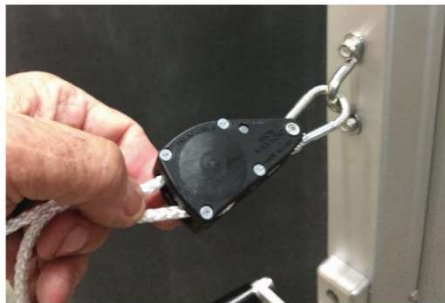


Illustration #3

## **Multi-Court Set Up with Common Center Post**

When setting up multi court systems with common center posts please make note of the following **important steps**.

1. Begin by connecting **both ends of all nets** to posts.
2. Tension nets **partially** one at a time. **DO NOT** tension one net fully and then go on to the next as this will cause excess tension on the first net tightened and damage the posts. Tension nets partially and then go back to add tension to each until nets are fully tensioned. On a 3 post 2 net system it can be made easier by having two people tension the nets simultaneously.

If you have any questions, Please contact us at **833-724-3533** for clarification. **We are here to serve you!**

### **Notes:**

Your posts are designed to flex when under tension. If your posts do not have some bend in them when the net is tensioned, you do not have the net tight enough.

### **Official Net Heights:**

Juniors - 12 and under	7'-0"
Women, Girls/Boys 14 and under	7'-4 1/8"
Men	7'11 5/8"

**Remember** – Set your **posts** 2" above these for accurate net height.

# **Volleyball System**

## **Maintenance and Warranty Information**

### **Maintenance Instructions for Schelde Volleyball Equipment**

- Make sure all nuts and bolts are tightened and secure.
- Lubricate the winch periodically with lithium grease by removing the 4 bolts that hold the winch on the rail and placing grease on the gears through the hole behind the handle in the backside of the winch. A dab of grease will do. Rotate the handle to distribute the grease evenly on the gears.
- Padding can be cleaned with mild soap and water.
- Check cables for fraying and replace any with damage.
- Check lever locks for proper operation and locking. Replace if not locking properly.
- Replace warning labels and decals that are damaged. Contact Schelde Sports for new labels when needed.

Call Us! Whenever you have a question or concern we are here to serve you! (833) 724-3533

**Schelde Sports North America recommends you inspect your systems a minimum of 2 times per year.**

# VOLLEYBALL SYSTEM WARRANTY

Schelde Sports North America LLC warrants Schelde Sports brand Volleyball Systems to be free of all manufacturing defects as follows:

Upright tubing	LIFETIME
Custom Base	LIFETIME
Linear Winch	LIFETIME
Spool Type Winch	10 Years
Floor Sleeve	10 Years
Brass Floor Plate	5 Years
Net	1 Year
Padding	1 Year
Connector Cable	1 Year
Rail Hardware	1 Year
Antennas	1 Year
Sideline Markers	1 Year
Referee Stand	3 Years
Carts	3 Years

Defects caused by vandalism, abuse, neglect or lack of maintenance are excluded from warranty

Schelde Sports North America reserves the right to repair or replace at our sole discretion any defective item in the period listed above which begins when material is shipped from our warehouse

CUSTOMER IS RESPONSIBLE FOR ALL SHIPPING CHARGES FOR WARRANTY ITEMS.

THE WARRANTY DOES NOT COVER, AND IS INTENDED TO EXCLUDE, ANY LIABILITY ON THE PART OF SCHELDE SPORTS NORTH AMERICA LLC, WHETHER UNDER THIS WARRANTY OR UNDER ANY WARRANTY IMPLIED BY LAW, FOR ANY INDIRECT OR CONSEQUENTIAL CAMAGE FOR BREACH HEREOF OR THEREOF.

Note: Some states do not allow limitation on how long an implied warranty lasts or on the exclusion of indirect or consequential damages, so the above limitation on the duration of implied warranties and the above exclusions of incidental and consequential damages may not apply to you.

## **Schelde Sports North America**

**2119 Old US 27 S Ste. C**

**ST Johns MI 48879**

**Ph: 833-724-3533 F: 517-999-8245**

**E-Mail: [info@scheldesports.com](mailto:info@scheldesports.com) Website: [www.scheldesports.us](http://www.scheldesports.us)**